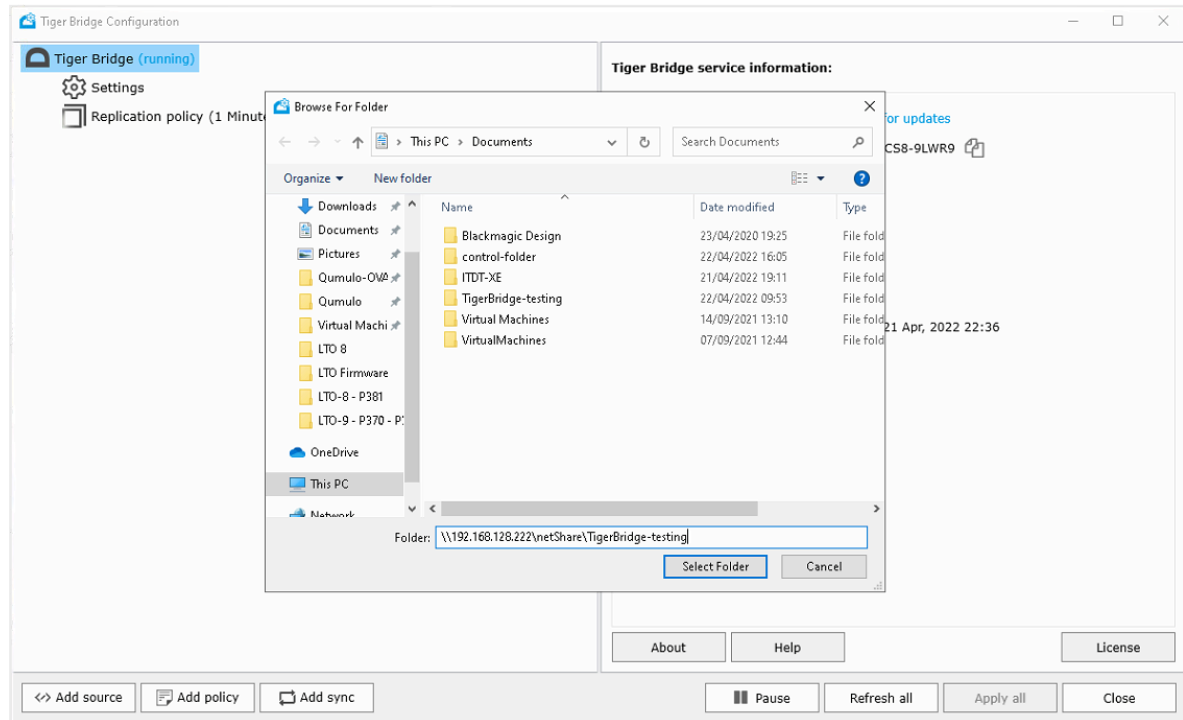


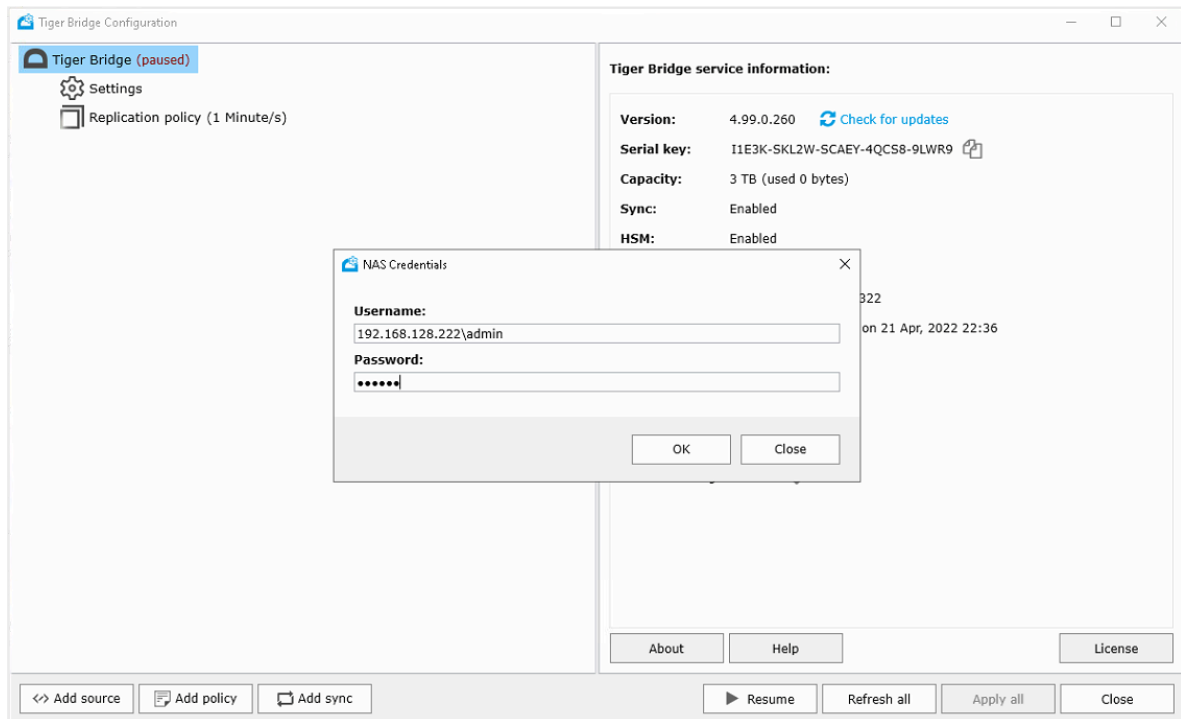
To add a NAS source:

1. In the **Tiger Bridge Configuration**, click **Tiger Bridge** in the left pane and then click **Add source**.
2. Enter the network share path in the Explorer window and click **Select Folder**

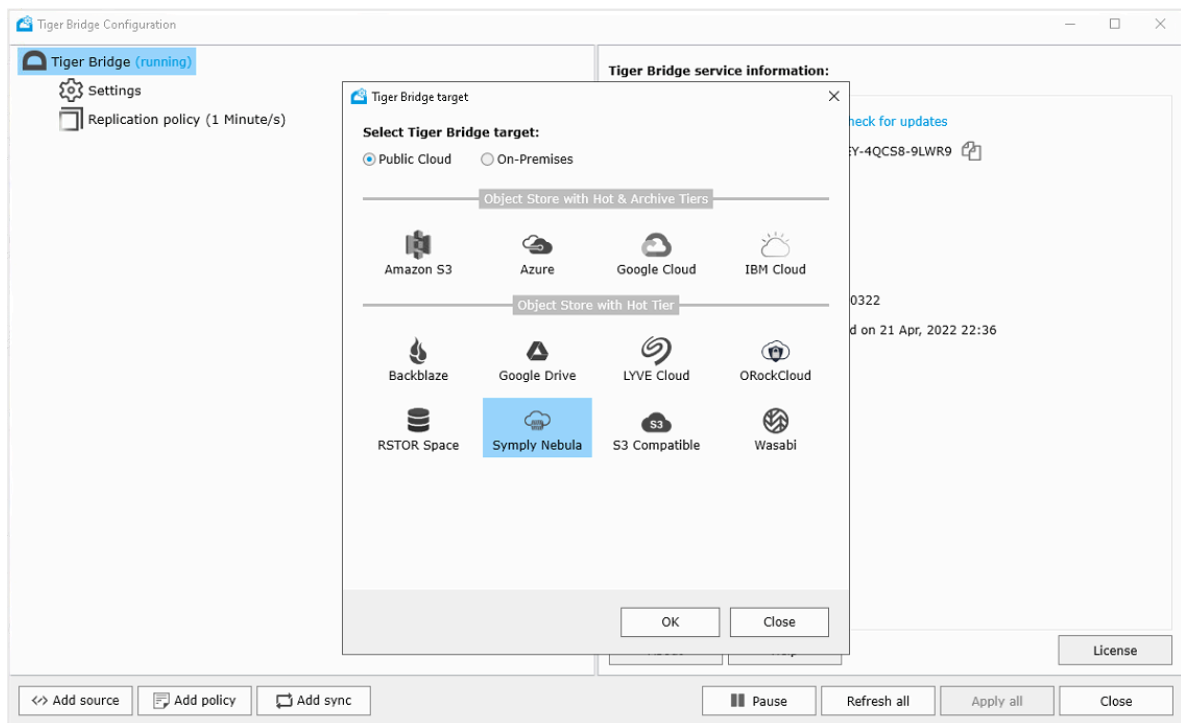


3. Enter the NAS' network share credentials

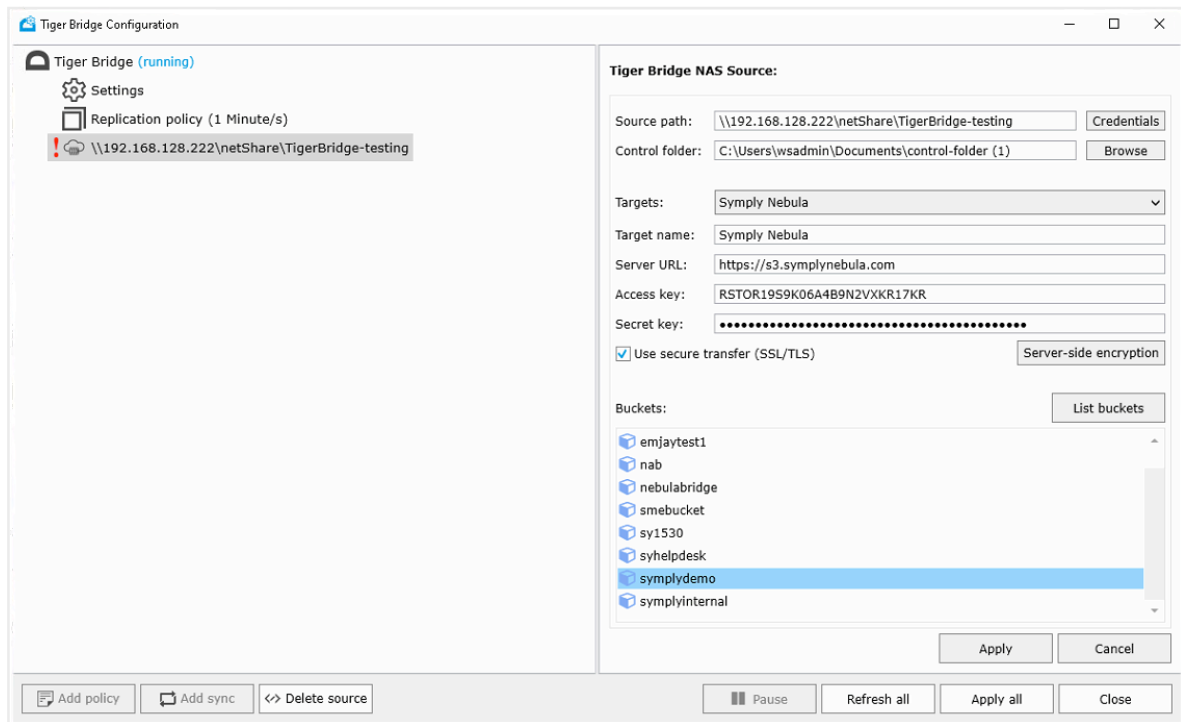
Important: You must enter the username in the following format [NAS server domain name or IP address][username]. For example, if the IP address of your NAS server is 10.200.0.65 and the name of the user, whose credentials you are providing is "test", enter the following in the Username field:
10.200.0.65\test



4. Select the **SymplyNEBULA** Public Cloud target from the list

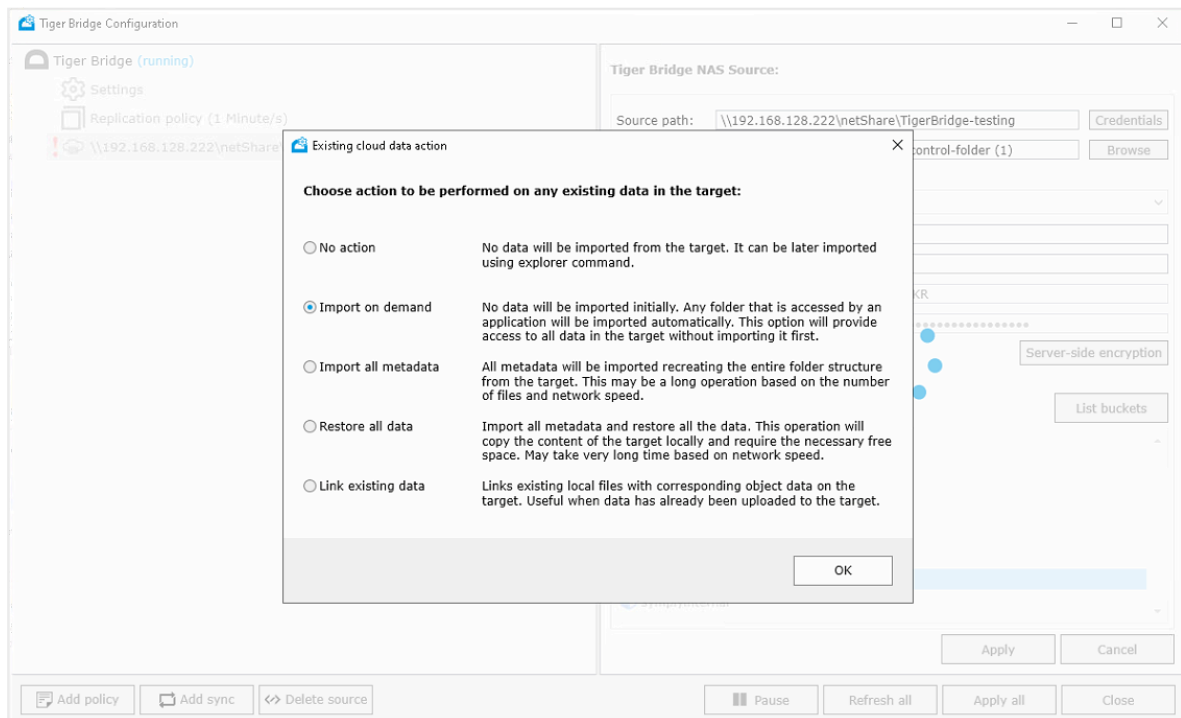


5. Enter the **Server URL** for SymplyNEBULA (<https://s3.symplynebula.com>) along with your SymplyNEBULA **Access key** and **Secret key**, then click **List buckets**.



6. Select the desired **Existing cloud data action** option and click **OK**.

1. Please refer to the full *Tiger Bridge Administration Guide* for full details on these options.



7. Confirm the dialog stating the source/target changes have been successfully applied.

